



Four Dormitory Complex
East Healey Street,
Champaign,
Illinois,
USA.

Prairie Sky Consulting

1104 Parkview Drive
Mahomet
Illinois
USA 61853

Email: bill.east@prairieskyconsulting.com
Phone: 309 - 807 - 1519
Web: www.prairieskyconsulting.com/

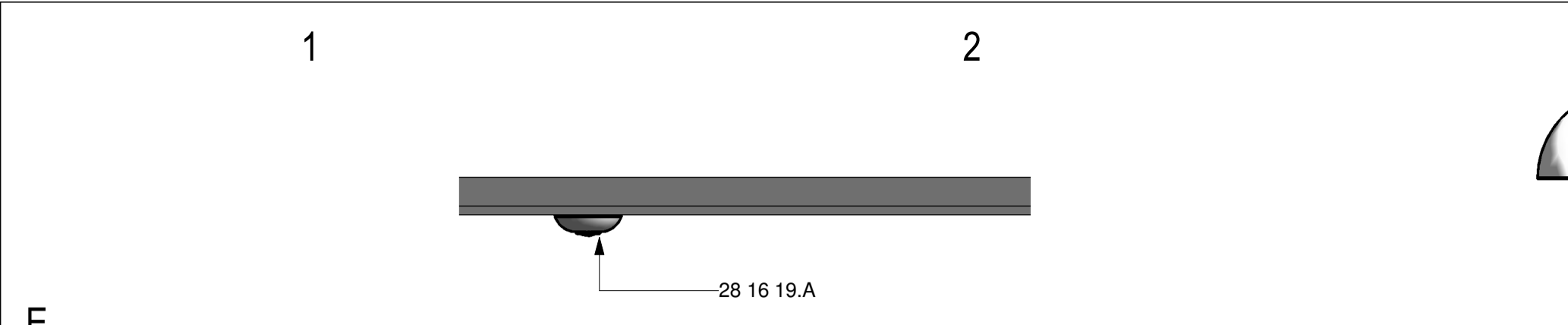
REV	DATE	DESCRIPTION
3	25.07.17	Final Issue
2	11.07.17	Keynotes Revised
1	16.06.17	Issued For Review

PROJECT NUMBER	East Dormitory
DRAWN BY	F.W.
CHECKED BY	B.E.
SCALE (@ A1)	As indicated
DATE	06/08/17
STATUS	Final Issue
REVISION	3

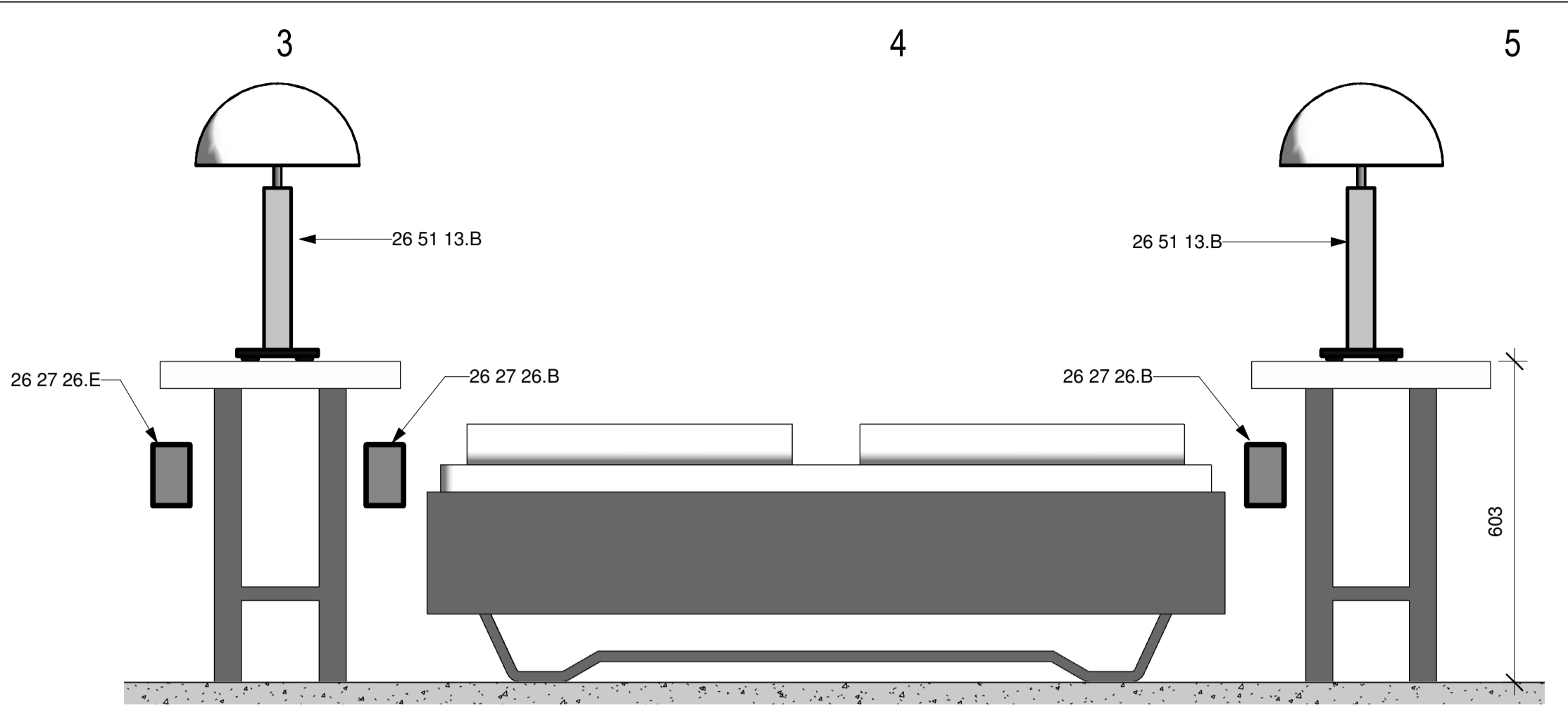
PROJECT	Four Dormitory Complex
TITLE	Typical Installation - Details
	E-501
	SHEET 5 OF 6

THIS DRAWING IS THE PROPERTY OF MMA ENVIRONMENTAL AND SHALL NOT BE USED, REPRODUCED OR DISCLOSED TO ANYONE WITHOUT THE PRIOR WRITTEN PERMISSION OF MMA ENVIRONMENTAL.

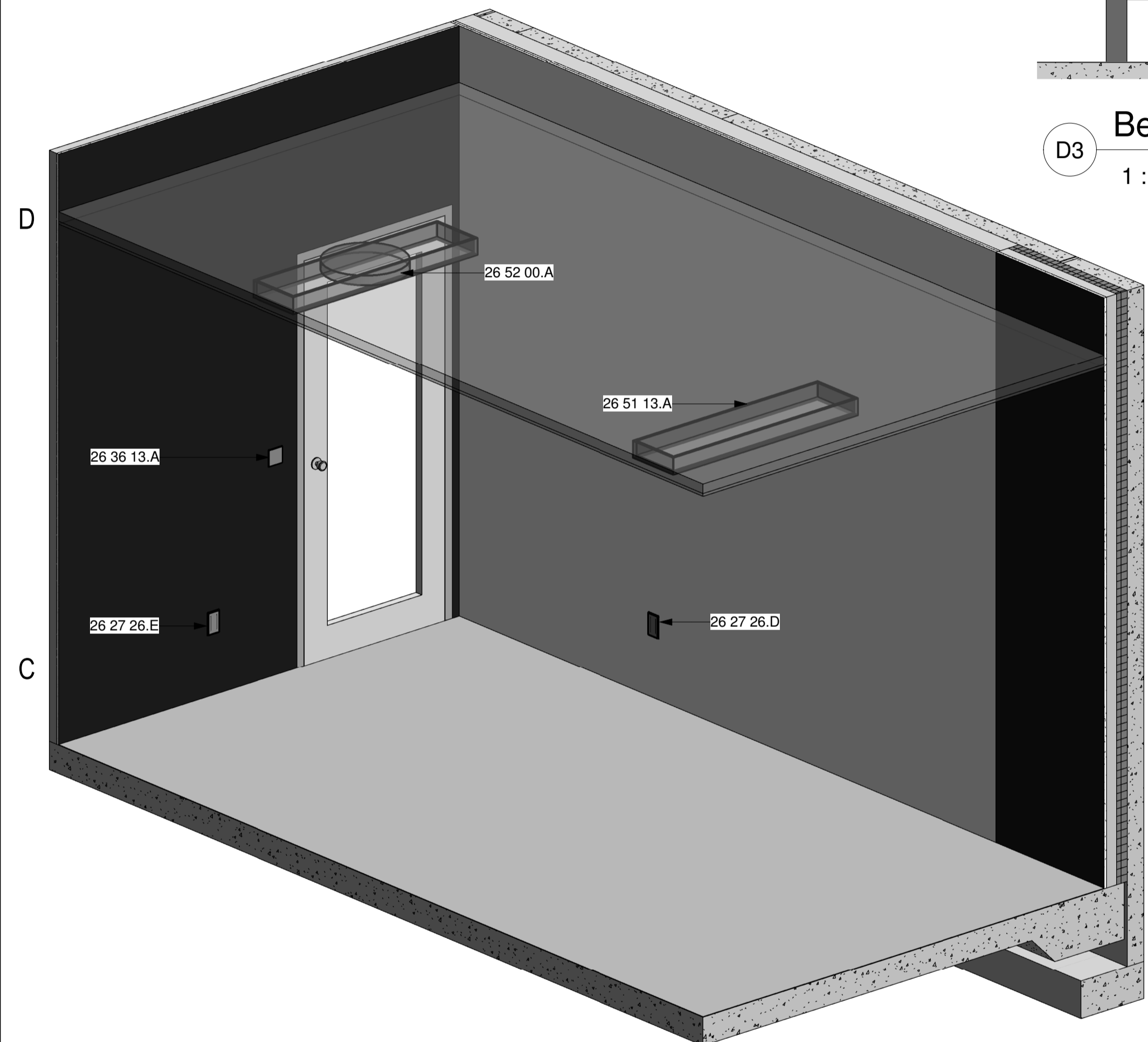
17_All Equipment Schedule	
Keynote	Family
26 24 16.A	Lighting and Appliance Panelboard - 400V MCB - Surface
26 26 00.A	Emergency Lighting Distribution Board
26 27 26.A	M_Receptacle - TV /Satellite Socket
26 27 26.B	M_Duplex Receptacle - Top Switched
26 27 26.C	M_Duplex Receptacle OFCI
26 27 26.D	M_Receptacle - 220V
26 27 26.E	M_Receptacle - DATA socket
26 36 13.A	Lighting Switches One Way
26 36 13.B	Lighting Switches Two Way
26 36 13.C	Lighting Switches Three Way
26 36 13.D	Lighting Switches Four Way
26 51 00.A	Pendant Light - Linear - 2 Lamp
26 51 13.A	Ceiling Light - Linear Box 300x1200
26 51 13.B	Table Lamp - Hemispheric
26 51 13.C	Coffer Light - Parabolic Square
26 52 00.A	Ceiling Light - Linear Box emergency light 300x1200mm 1Lamp 230 v
26 52 00.B	CeilingLight-RoundEmergency
28 16 19.A	CeilingOccupancySensor



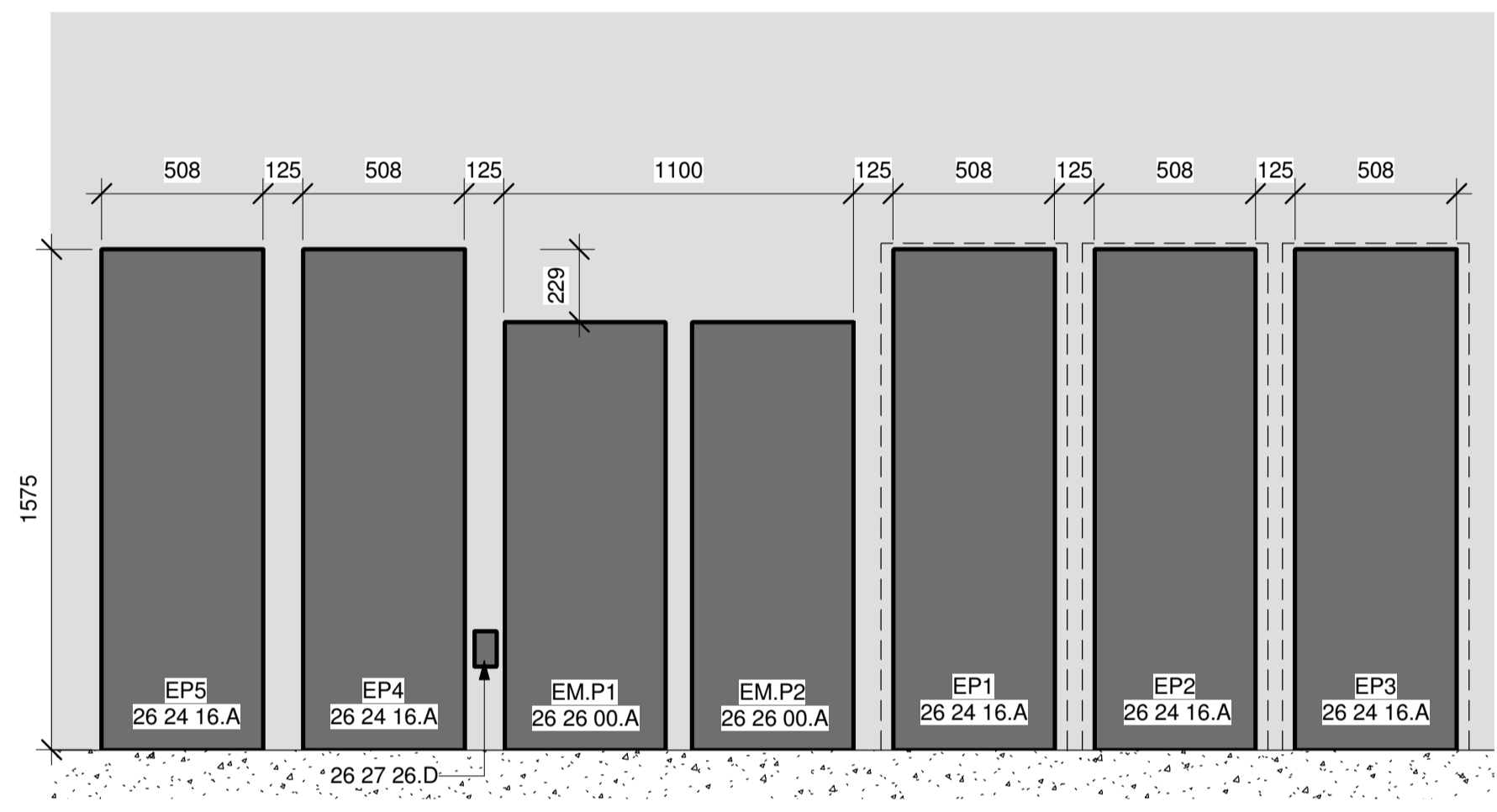
E1 Occupancy Sensor Detail
1 : 10



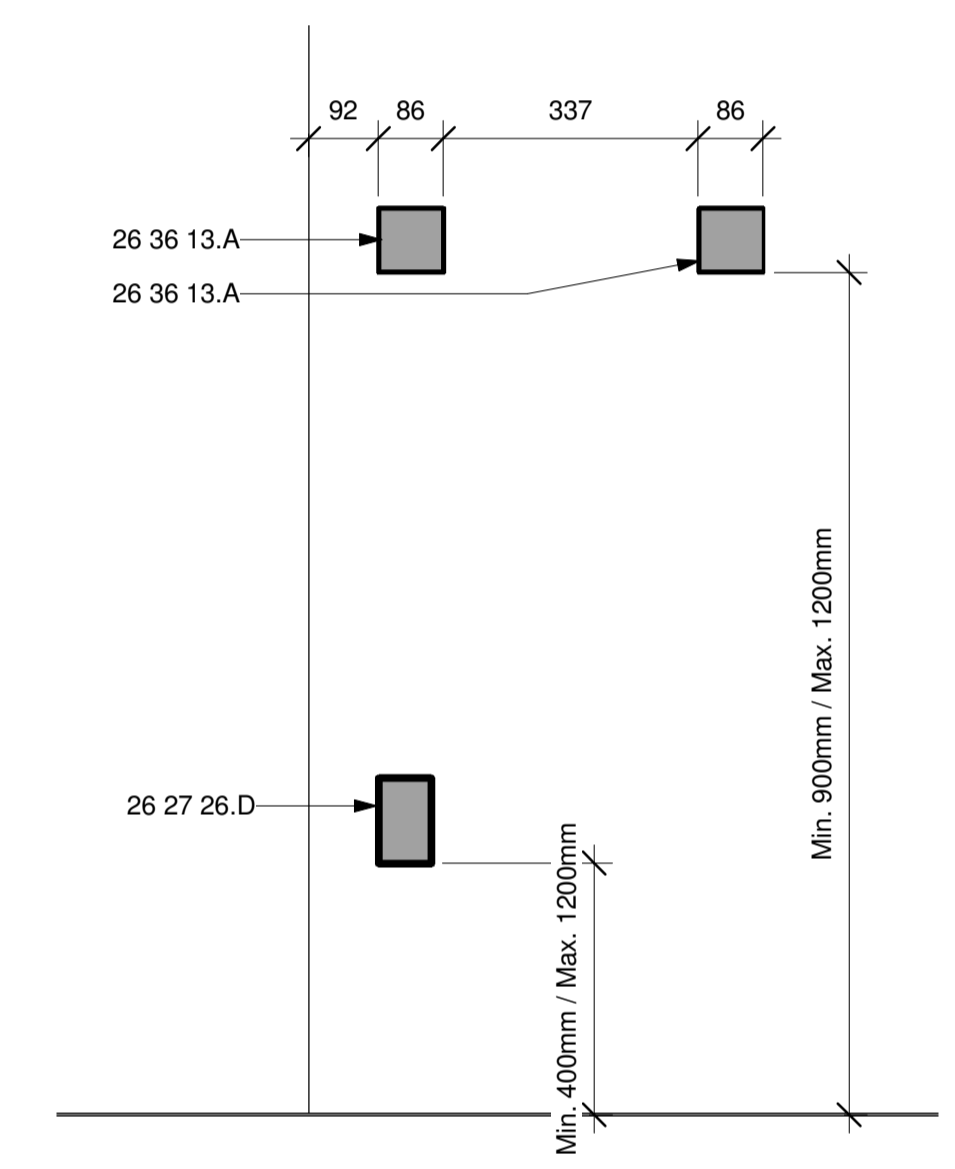
D3 Bedside Lamps and Outlets
1 : 10



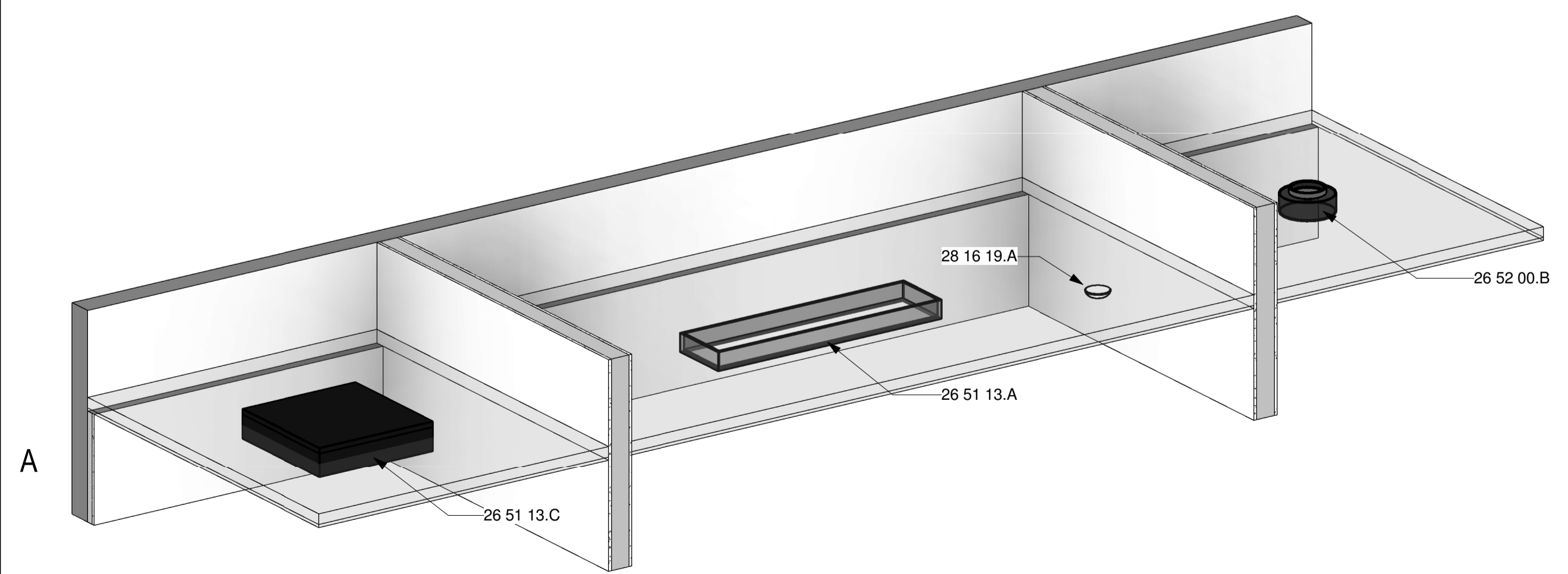
B1 Lighting/Switch/Socket 3D Detail



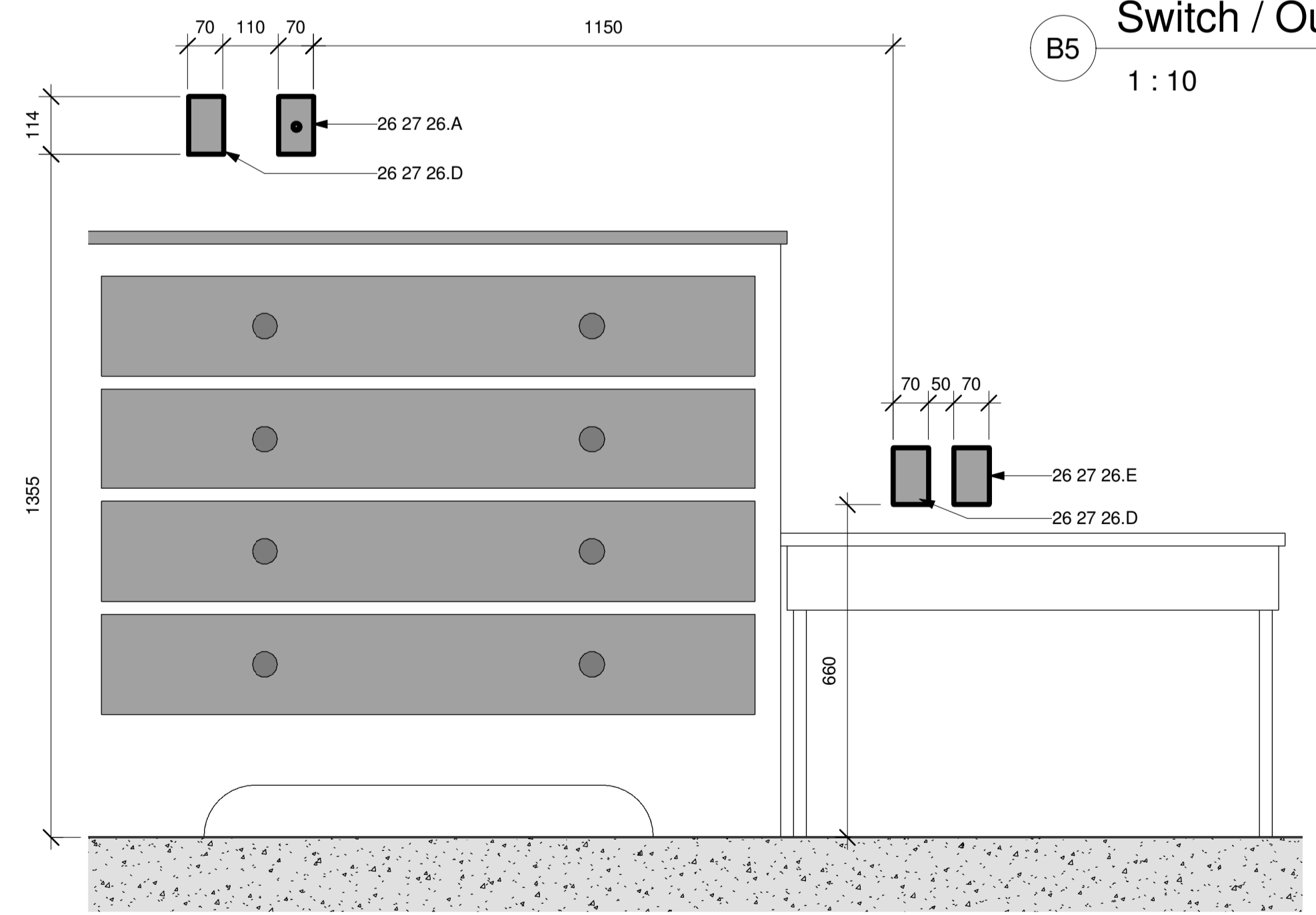
C3 Panel Board Detail
1 : 20



B5 Switch / Outlet Detail
1 : 10



A1 3D Lights Detail



A4 Data / TV Outlet Detail
1 : 10

THIS DESIGN IS NOT INTENDED TO MEET THE BUILDING CODES OR REGULATIONS OF ANY SPECIFIC COUNTRY OR JURISDICTION.
SOME COMPONENTS HAVE BEEN OMITTED AS THE DESIGN WAS MODELLED EXCLUSIVELY USING OUT OF THE BOX REVIT FAMILIES.