

Keynote	Family
26 24 16.A	Security Panel
28 01 30.51.A	Intruder Security Alarm Sounder
28 13 00.A	Bell
28 13 00.B	Door Lock Magnetic
28 13 00.C	Release Button
28 13 00.D	Keypad
28 13 43.A	Access Card Reader
28 16 19.A	Wall Mounted Passive Infrared Detector
41 24 33.A	Magnetic Contact

MMA ENVIRONMENTAL
M&E Consulting Engineers

4E Fingal Bay Business Park
Balbriggan
Co. Dublin
K32 HN62
Ireland

Email: info@mma.ie
Phone: +353 1 6905040
Web: www.mma.ie

CERTIFIED
Net
MANAGEMENT SYSTEM

NSAI Quality
NSAI Certified

ACEI ASSOCIATION OF
CONSULTING ENGINEERS
OF IRELAND

Four Dormitory Complex
East Healey Street,
Champaign,
Illinois,
USA.

Prairie Sky Consulting

1104 Parkview Drive
Mahomet
Illinois
USA 61853

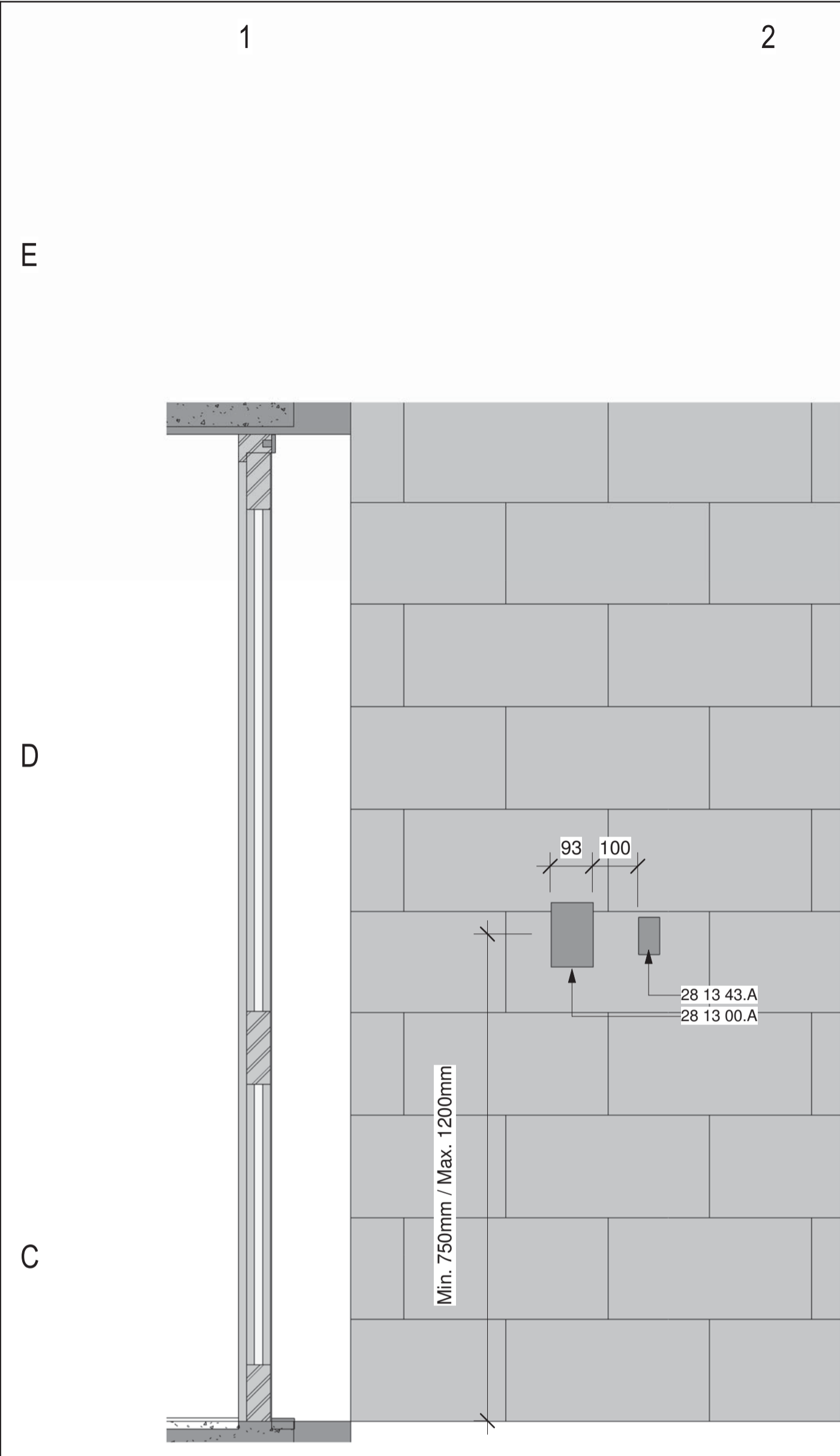
Email: bill.east@prairieskyconsulting.com
Phone: 309 - 807 - 1519
Web: www.prairieskyconsulting.com/

REV	DATE	DESCRIPTION
6	26.07.17	Final Issue
5	03.07.17	Spaces Revised
4	27.06.17	Keynotes Revised
3	30.05.17	Drawing Revised as per comments
2	07.04.17	Revised Parameters as per comments
1	28.03.17	Issued for Review

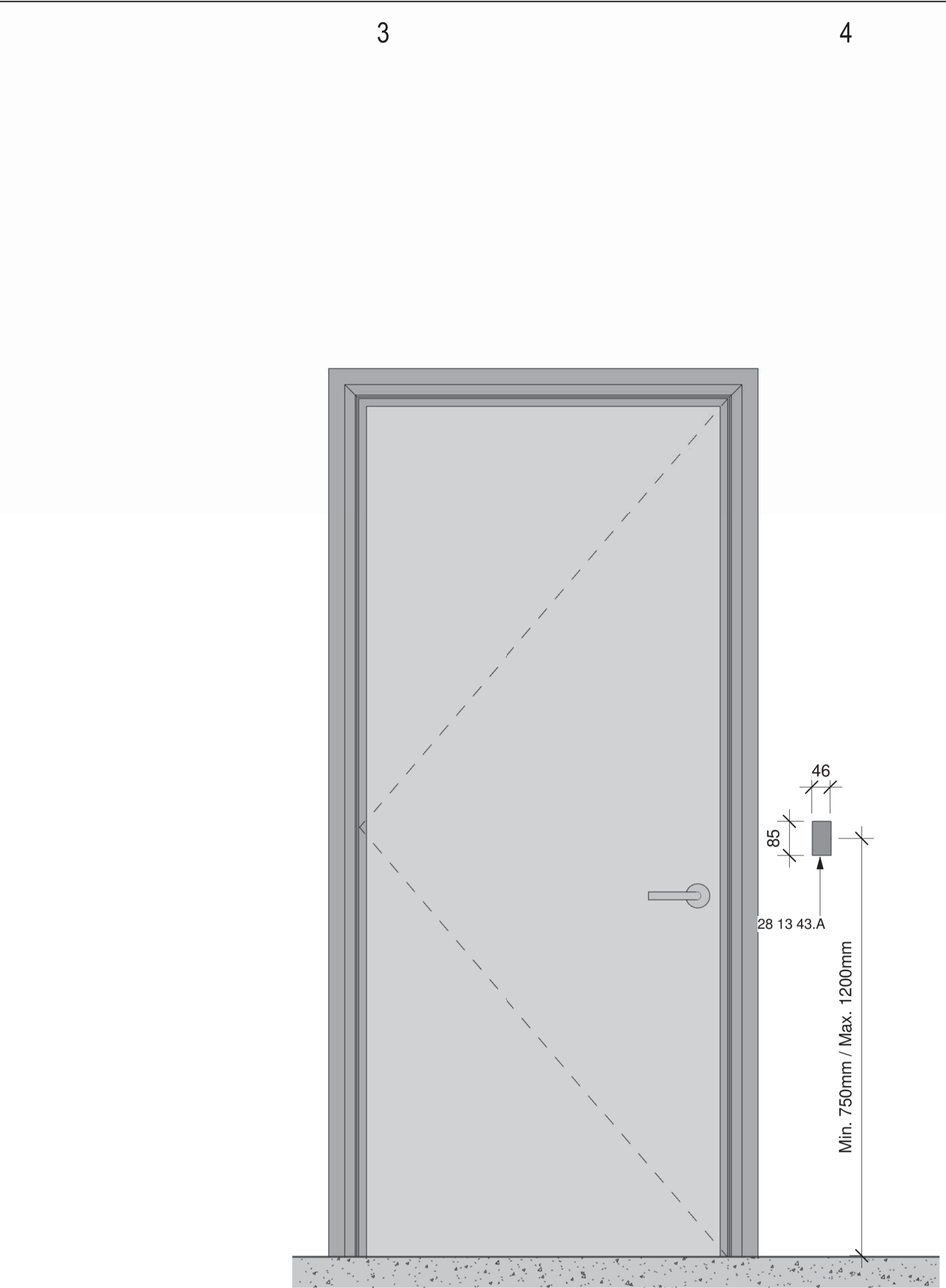
PROJECT NUMBER	East Dormitory
DRAWN BY	R.K.
CHECKED BY	B.E.
SCALE (@ A1)	As indicated
DATE	03/20/17
STATUS	Final Issue
REVISION	6

PROJECT	Four Dormitory Complex
TITLE	Typical Installation Details
	TY501
SHEET	3 OF 4

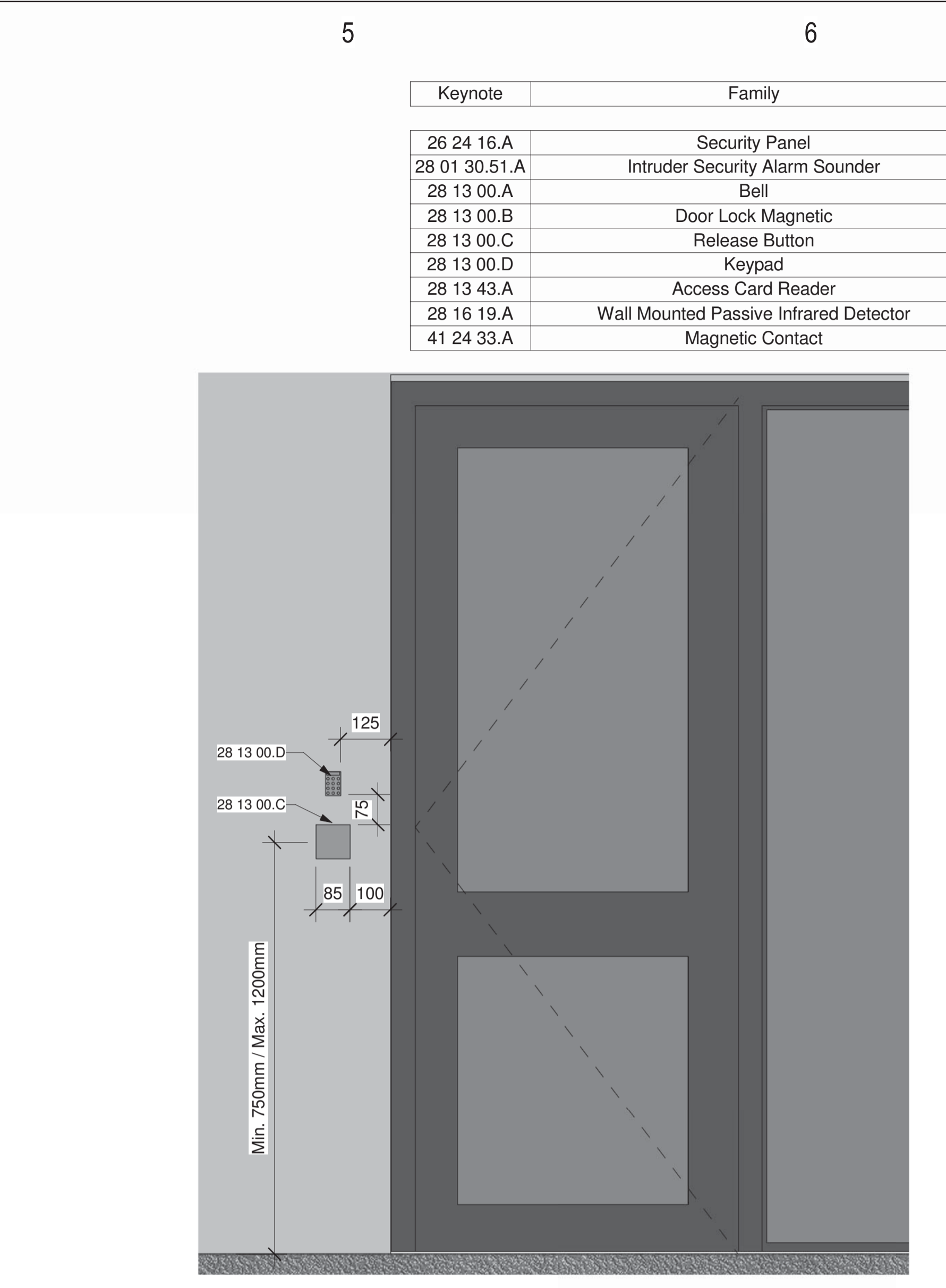
THIS DRAWING IS THE PROPERTY OF MMA ENVIRONMENTAL AND SHALL NOT BE USED, REPRODUCED OR DISCLOSED TO ANYONE WITHOUT THE PRIOR WRITTEN PERMISSION OF MMA ENVIRONMENTAL.



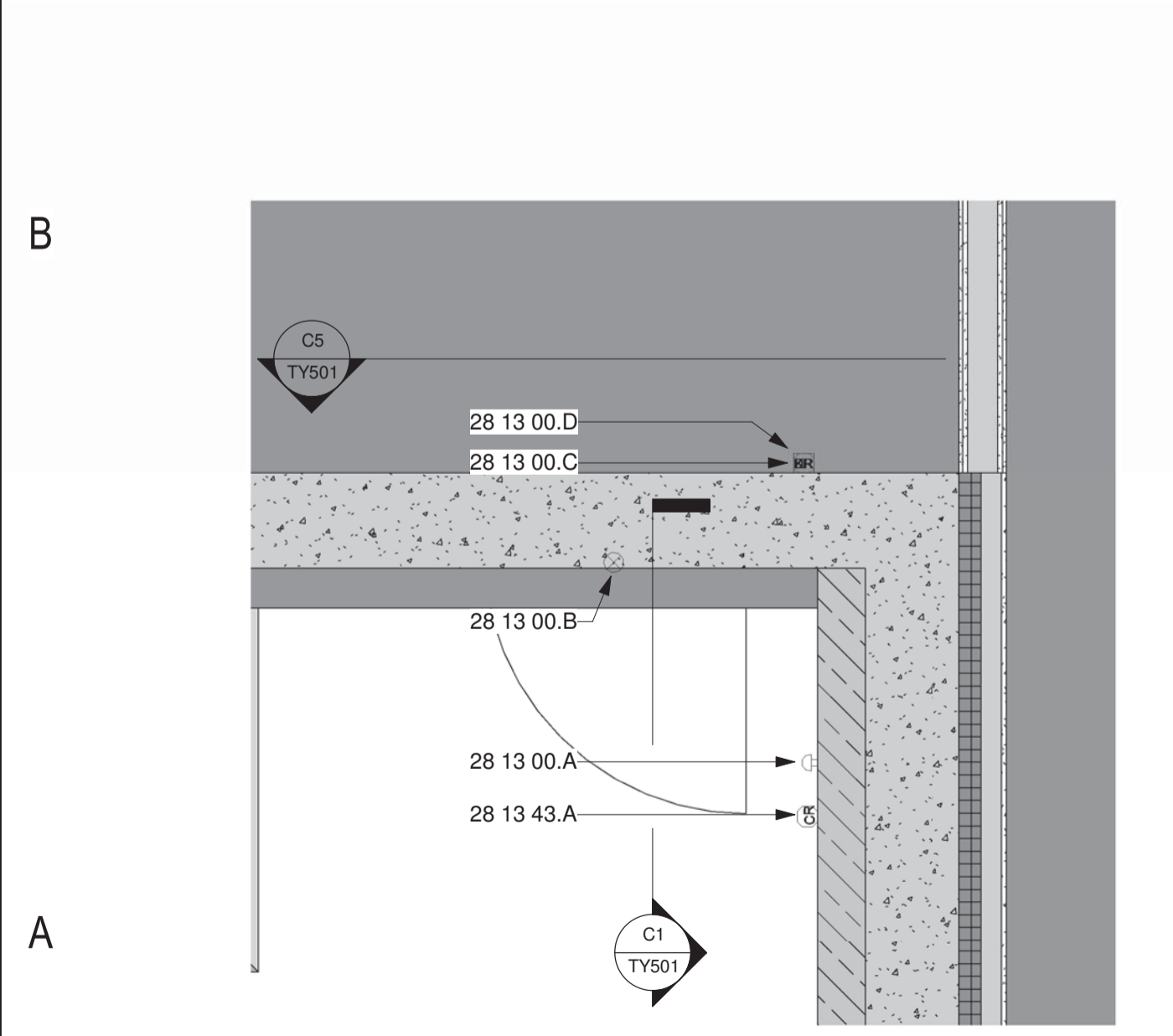
C1 Door Bell/Access Card Reader Detail
1 : 10



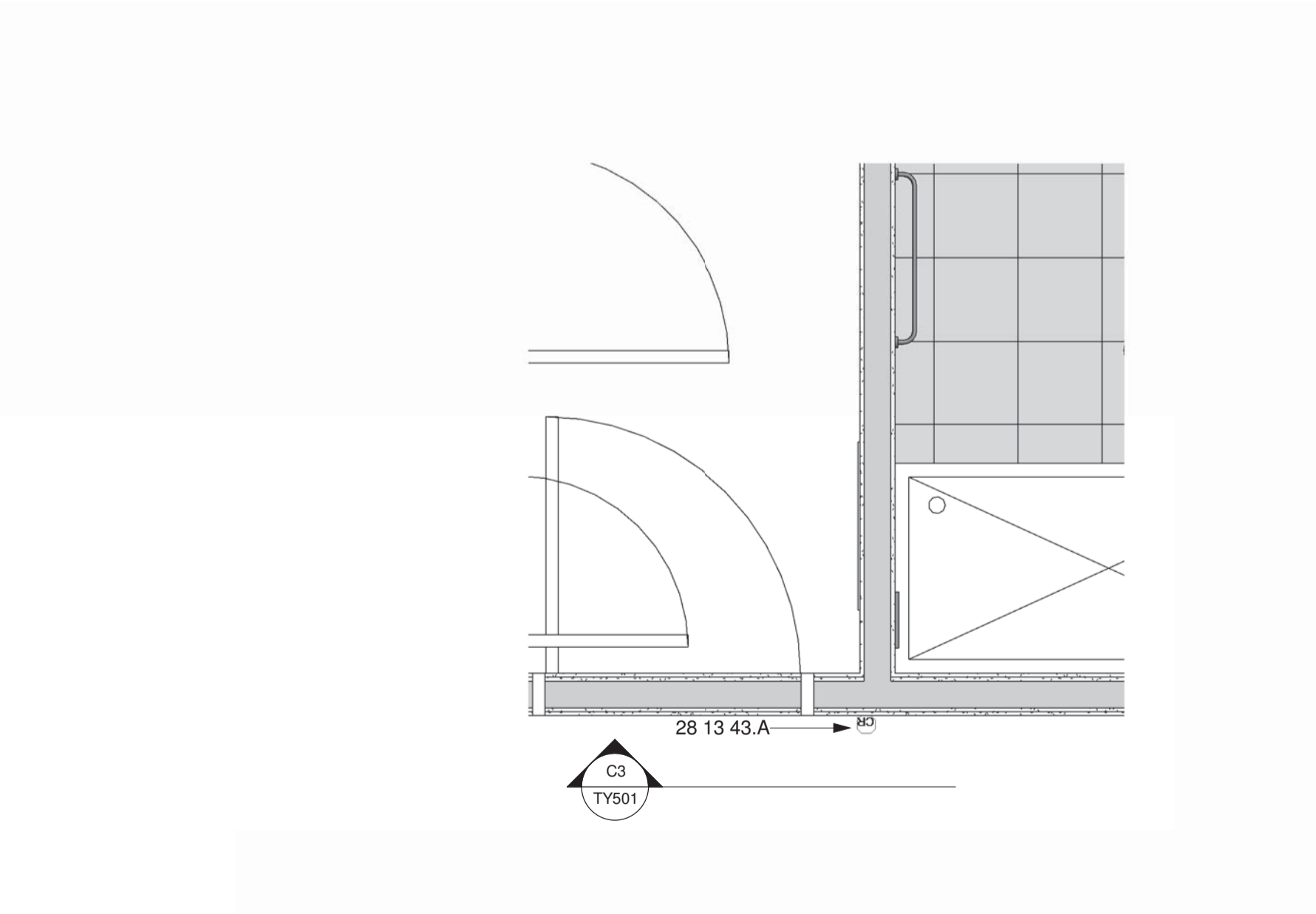
C3 Standard Room Access Card Reader Detail
1 : 10



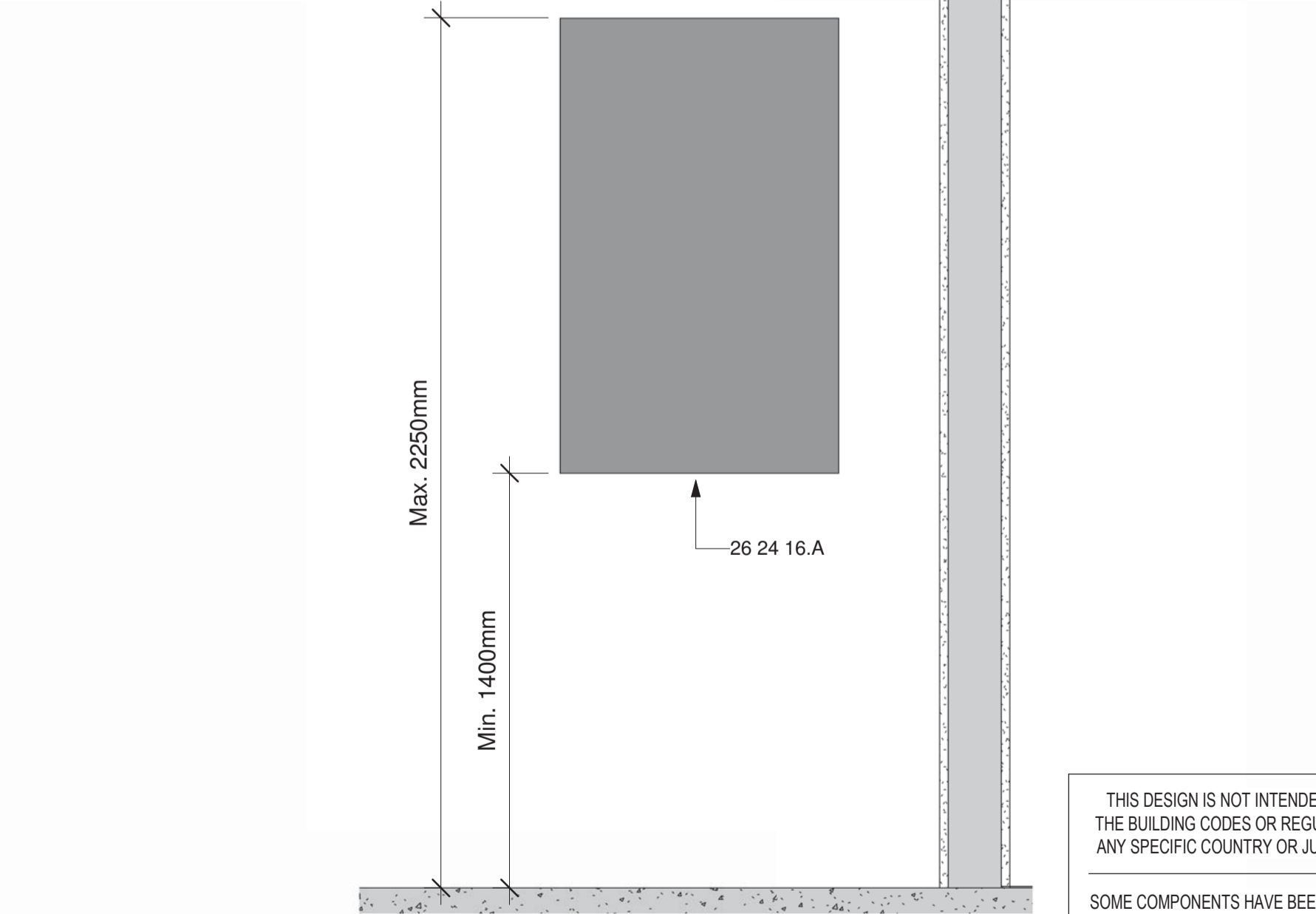
C5 Release Button/Keypad Detail
1 : 10



A1 Level 1 - Details
1 : 20



A3 Level 2 - Details
1 : 20



A5 Panelboard Detail
1 : 10

THIS DESIGN IS NOT INTENDED TO MEET THE BUILDING CODES OR REGULATIONS OF ANY SPECIFIC COUNTRY OR JURISDICTION.
SOME COMPONENTS HAVE BEEN OMITTED AS THE DESIGN WAS MODELLED EXCLUSIVELY USING OUT OF THE BOX REVIT FAMILIES.